

**Color Registration Mark Sensors** respond to light levels that are reflected back in shades of gray. Each registration mark and background color combination responds best to a specific LED color.

Choose an LED color that will create the best contrast between the registration mark and the background.

1. Choose a color on the chart that best matches your **background**. Now choose a color that best matches your **registration mark**.
2. Use the chart to line up your registration mark color with your background color. You'll find up to 4 choices of LED: **red**, **green**, **white** or **blue**.
3. Pick the most effective LED according to numerical rank, represented by 1<sup>st</sup>, 2<sup>nd</sup>, 3<sup>rd</sup> or 4<sup>th</sup> best choice.

*The charts below show you how each LED color "sees" colors in varying shades of gray.*

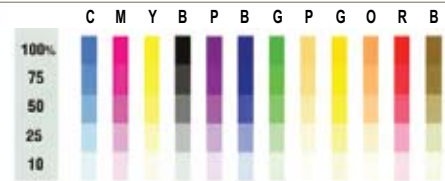
		BACKGROUND COLOR															
		Cyan	Magenta	Yellow	Black	Purple	Blue	Green	Peach	Gold	Orange	Red	Brown	White			
MARK COLOR	Cyan		1 2 3	1 2 3	1 2 3 4	1 2 3	1 2 3 4	1	1 2 3	1 2 3	1 2 3	1 2 3	1 2 3	1 2 3 4		Cyan	
	Magenta		1 2 3	1 2	1 2 3 4	1 2 3	1 2	1 2 3	1 2 2	1	1 2	1 2	1 2 3	1 2 3		Magenta	
	Yellow		1 2 3	1 2	1 2 3 4	1 2 3 4	1 2 3	1 2	1	1	1	1 2 3	1 2 3	1 2 2		Yellow	
	Black		1 2 3 4	1 2 3 4	1 2 3 4	1 2 3 4	1 2 2 3	1 2 2	1 2 3	1 2 3 4	1 2 3 4	1 2 2 3	1 2	1 2 3 4	1 2 3 4		Black
	Purple		1 2 3	1 2 3	1 2 3	1 2 2 3	1 2 3 4	1 2	1 2	1 2 3 4	1 2 3	1 2 3 4	1 2 3	1 2	1 2 3 4		Purple
	Blue		1 2 3 4	1 2	1 2 3 4	1 2 2	1 2	1 2 3 4	1 2 3	1 2 3	1 2 2 3	1 2 3 4	1 2 3 4	1 2 3 4	1 2 3 4		Blue
	Green		1	1 2 3	1 2	1 2 3	1 2	1 2 3 4	1 2 3	1 2	1 2 3	1 2 3 4	1 2 3	1 2 3 4	1 2 3 4		Green
	Peach		1 2 3	1 2 2	1	1 2 3 4	1 2 3 4	1 2 3	1 2 3	1 2	1	1 2 3	1 2 3 4	1 2 3	1 2 3		Peach
	Gold		1 2 3	1	1	1 2 3 4	1 2 3	1 2 3	1 2	1 2	1	1 2	1	1 2 3	1 2 3		Gold
	Orange		1 2 3	1 2	1	1 2 2 3	1 2 3 4	1 2 2 3	1 2 3	1	1	1 2 3	1 2 3 3	1 2 3	1 2 3		Orange
	Red		1 2 3	1 2	1 2 3	1 2	1 2 3	1 2 3 4	1 2 3 4	1 2 3	1 2	1 2 3	1 2 3	1 2 3	1 2 3		Red
	Brown		1 2 3	1 2 3	1 2 3	1 2 3 4	1 2	1 2 3 4	1 2 3	1 2 3 4	1	1 2 3 3	1 2 3	1 2 3 4	1 2 3 4		Brown
	White		1 2 3 4	1 2 3	1 2 2	1 2 3 4	1 2 3 4	1 2 3 4	1 2 3 4	1 2 3	1 2 3	1 2 3	1 2 3	1 2 3 4	1 2 3 4		White

N Red LED  
N Green LED  
N White LED  
N Blue LED

MARK COLOR

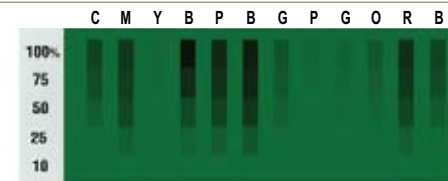
**Your Actual Color:**

Color in shades and tints as you perceive it. \*White LEDs detect these colors in grayscale. Use white in mid-level contrast applications, especially with black and red combinations.



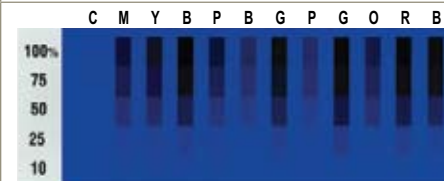
**Green LED:**

For general use as it is most sensitive to a variety of color combinations.



**Blue LED:**

Use for detection of the lightest shaded colors and tints. Effective for pastel colors and difficult color combinations such as 20% yellow on newsprint.



**Red LED:**

Use with certain colors (see below) as it provides the highest contrast for these colors.

