



Antenna Performance

| | |
|--------------------------------|---|
| Antenna Performance | 3 |
| Gain | 4 |
| Radio Power and the FCC | 6 |
| Link Margin Calculations | 7 |
| The Banner Way | 8 |
| Glossary..... | 9 |

In this new age of wireless technology, controls and automation engineers are increasingly asked to evaluate and install wireless sensing and monitoring systems into a wide range of environments. To take advantage of the flexibility, reliability, and ease of installation that wireless networks offer, engineers must familiarize themselves with new technology and new terminology, especially related to the antennas used in wireless systems.

The antenna is an important component of a wireless network. The proper antenna can optimize the range and reliability of a radio network while the wrong antenna causes high-performance wireless devices to appear to stop operating.

This white paper will give controls and automation engineers the basic knowledge of key performance characteristics used to analyze antenna performance within the installation environments. These metrics include an understanding of:

- Antenna types and performance,
- Gain,
- Power and decibels, and
- Link margin calculations

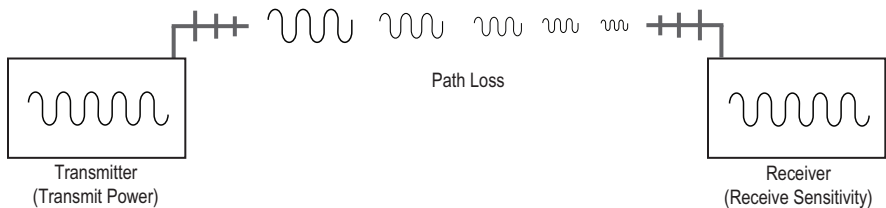
This white paper is the third in a series about wireless technology.

Antenna Performance

Every antenna has specific characteristics that determine the range and radiation pattern of the radio signal.

In sensor networking systems there are two basic types of antennas: omni-directional (omnis) and directional (Yagis).

Within these two broad categories there are many different designs, but all antennas shape the RF signal into a signal radiation pattern that increases the transmission or listening range of the radio.



Omni-Directional Antennas

As the name implies, an omni-directional antenna transmits and receives radio signals equally in all directions. Because of the physics associated with radio, an omni-directional antenna's effective signal pattern looks like a donut with the antenna located in the center of the donut hole. A good example of an omni-directional antenna is a radio station transmission tower mounted on a mountaintop. Antennas used on cell phones or walkie-talkies are also omni-directional antennas.

In a wireless network, omni-directional antennas are best suited to indoor environments and for devices at the center of a star topology network. For long range point-to-point communications, omni-directional antennas would not be the best option.

Directional Antennas – the Yagi

A Yagi antenna, named after its inventor, is a directional antenna because it focuses most of the energy of the transmitter or receiver in a single direction. Yagi antennas are often used in cable TV and telecommunications distribution systems.

Yagi antennas are ideally suited for long range, line-of-sight communications. In sensor networks, Yagis are often used in outdoor applications like tank level monitoring. If there is no line of sight, a Yagi antenna will not perform well.

Adding gain to a radio system does not amplify the signal; the gain focuses the signal.

Adding gain to a system usually minimizes wasted energy sent vertically and instead focuses that energy into the horizontal plane.

Gain

The shaping of the radio signal is what is referred to as antenna gain. Similar to how nozzles redirect the flow of water, antenna gain focuses the radio signal in a particular direction and radiation pattern. The higher the gain of an antenna, the more focused the signal.

Antenna gain is measured in decibels. A decibel is a logarithmic ratio between a specific value and a base value of the same unit of measure. With respect to radio power, dBm is a ratio of power relative to 1 milliwatt, where 1 mW equals 0 dBm.

The first table shows the logarithmic relationship between dBm and power: a small change in dBm results in a large change in power.

For every reduction of 10 dBm the power is reduced by a factor of ten and power levels below 1 mW are negative decibels. The second table illustrates how the system's power is reduced by half with a change of only 3 dBm.

Experimentation indicates that for every 6 dB increase in gain, the radio signal range doubles. Therefore, if a radio system with a unity gain antenna (0 dB gain) transmits two miles, a 6 dB antenna on the same radio transmits the signal four miles.

Specifications for most antennas refer to the gain in either dBm, dBi, or dBd. While it isn't important to understand at this point what these decibel ratings refer to, a good rule is:

$$\text{dBm} = \text{dBi} = \text{dBd} + 2.15$$

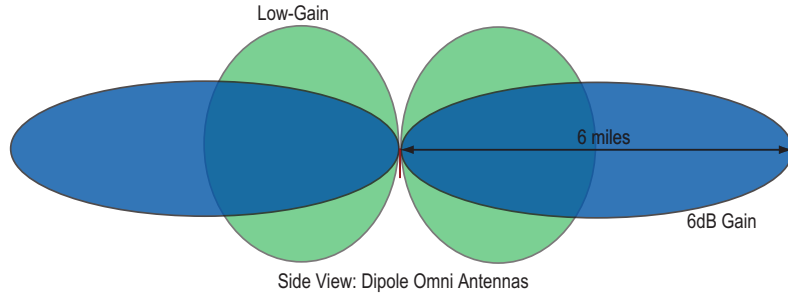
When adding the gains and losses of a total radio system, always use the same dB unit for each system component.

| dBm | Power |
|-----|-------------|
| +20 | 100 mW |
| +10 | 10 mW |
| 0 | 1mW |
| -10 | 100 μ W |
| -20 | 10 μ W |
| -30 | 1 μ W |
| -40 | 100 nW |
| -50 | 10 nW |
| -60 | 1 nW |
| -70 | 100 pW |

| dBm | Power |
|-----|--------|
| 30 | 1.00 W |
| 29 | 794 mW |
| 28 | 631 mW |
| 27 | 501 mW |
| 26 | 398 mW |
| 25 | 316 mW |
| 24 | 251 mW |

High-Gain Omni Antennas

Adding gain to an omni-directional antenna stretches out the signal pattern along the horizontal axis and shortens the signal pattern along the vertical axis.

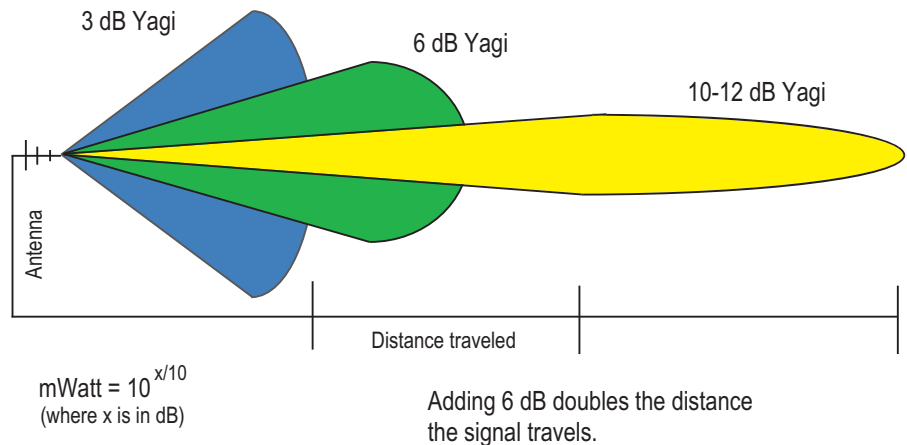


With a star topography network, using an **omni-directional antenna** on the Gateway ensures all Nodes fall within the antenna radiation pattern.

Yagi antennas are best used in line-of-sight radio systems because Yagis focus the radio signal in a specific direction.

High-Gain Yagi Antennas

Because Yagi antennas yield narrower radiation patterns, accurately aiming a high-gain Yagi becomes very important when setting up a radio network. Radio network installers can use a variety of tools to accurately aim a Yagi including scopes, laser sights, and trial and error.



Radio Power and the FCC

When reviewing data sheets for radio products, two important specifications to notice are the transmit power and receive sensitivity of the radios.

The transmit power represents transmitted signal strength while the receive sensitivity refers to the minimum signal strength the receiver can reliably detect. Both specifications are specific to the radio, not the antenna, and are given in dBm or in milliwatts.

For the transmitter, larger positive numbers indicate strong transmission. For the receiver, smaller numbers indicate better reception (receiver sensitivity is always a negative number). Even a 1 dBm shift in transmit power or receive sensitivity can represent a significant difference in radio range.

According to rules established by the FCC, radio systems operating in the unlicensed bands are restricted in the power of their radio systems. No radio system may exceed 30 dBm total radiated power, or approximately 1 Watt.

Link Margin Calculations

When two radios are communicating they are said to be linked. The quality or strength of the link is measured in decibels (dB). The “link margin equation” is the main tool engineers use when determining how far a radio signal travels. According to radio theory, any link margin greater than 0 dB is a strong link. In practice, systems engineers feel comfortable when the link margin between two radios is at least 6 dB, and preferably 10 dB.

Link margin is calculated using the following equations:

$$\text{Link Margin} = (\text{Total System Loss}) - (\text{Receiver sensitivity})$$

$$\text{Total System Loss} = \text{Transmitter gain} + \text{receiver gain} + \text{free space loss}$$

The total system loss is a negative number because the total gains of the transmitter and receiver are positive numbers and the total free space loss is a negative number. The receiver sensitivity is a negative number.

If the resulting link margin is greater than 10 dBi, the receiver should reliably receive the radio signal. If the resulting link margin is less than 10 dBi, the antenna used for the calculations may not be the correct antenna for this environment. If the FCC regulations have not been exceeded, consider using an antenna with a higher gain and recalculate the link margin.

Free Space Loss

Free-space loss refers to the part of the radio signal that naturally degrades as it travels through the atmosphere and is unrelated to the antenna type or its specifications.

Radio signal range is inversely proportional to frequency. The lower the frequency, the longer the range and the less susceptible the signal is to path-loss and interference. The equations for free space loss are:

$$\text{FSL}_{900\text{MHz}} = 31.5 + 20 \text{ Log } d \text{ (where } d \text{ is in meters)}$$

$$\text{FSL}_{2.4\text{GHz}} = 40 + 20 \text{ Log } d \text{ (where } d \text{ is in meters)}$$

To calculate the free space loss equations in miles, use the following conversion:

$$1 \text{ mile} = 1609.76 \text{ meters}$$

Putting it All Together



When calculating the total gain of a transmitter or receiver, include all losses from cabling, connectors, any item contributing to the signal propagation.

Data sheets for all radio transmitters, receivers, antennas, cabling, and connectors should list the transmit power, receive sensitivity, antenna gain, and cabling losses. Connector pairs may have a 0.5 dB loss while a lightning arrestor could include a loss of 0.5 to 1.5 dB. Cabling losses vary by manufacturer and are typically listed per 100 feet of cable.

The only parameter in question is free space loss. Using the equation for free space loss, systems engineers should be able to determine if there is sufficient link margin for each link in a point-to-point radio system.

The Banner Way

Banner's SureCross radio devices are designed to use a variety of antennas ranging from low-gain omni-directional antennas for small networks to high-gain Yagi antennas for long range line-of-sight applications. All Banner antennas meet FCC requirements and regulations.

| | Basic Specifications | Example Applications |
|---|---|---|
|  <p>Omni Directional</p> | <p>Transmit and receive equally in all directions.</p> <p>Ideally suited for the center device in a star topology network.</p> <p>With higher gain, transmit less signal vertically and more signal horizontally in all directions.</p> | <p>Low-gain omni antennas work well in any multipath or industrial environment such as monitoring and signaling bins for parts picking, monitoring automotive manufacturing steps, or regulating environmental conditions such as temperature and humidity.</p> |
|  <p>Directional</p> | <p>Transmit and receive best in a single direction.</p> <p>Requires a clear line-of-sight between devices.</p> <p>With high gain, transmit less signal vertically and more signal horizontally in one direction.</p> | <p>Yagis are best suited to long range, line-of-sight applications such as monitoring tank farms, waste water, or large-scale agricultural production facilities.</p> |

Once an antenna is installed, analyzing the signal strength is easy with Banner's Site Survey feature included with all Gateway devices. Conducting a Site Survey analyzes the radio communications link between the Gateway and any Node within the network by reporting the number of missed and received data packets. Site Survey results are listed as a percentage of data packets received and indicate the signal strength of the received signal.

Monitoring and control in processing applications are limited only by imagination. From tank levels to line pressure, from temperature to voltage, the SureCross Wireless Network can be easily and reliably deployed, scaled, analyzed, and redeployed into most environments.

| Term | Definition |
|---|---|
| decibel | A logarithmic ratio between a specific value and a base value of the same unit of measure. |
| EIRP (effective isotopic radiated power) | The effective power found in the main lobe of a transmitter antenna, relative to a 0 dB radiator. EIRP is usually equal to the antenna gain (in dBi) plus the power into that antenna (in dBm). |
| free space loss | The radio signal loss occurring as the signal radiates through free space. |
| gain | Represents how well the antenna focuses the signal power. A 3dB gain antenna doubles the effective transmitting power while every 6 dB doubles the distance the signal travels. Increasing the gain sacrifices the vertical height of the signal for horizontal distance increases. The signal is 'squashed' down to concentrate the signal strength along the horizontal plane. |
| gateway | The SureCross™ wireless network master communication device used to control and initiate commands to other devices in the radio network. |
| latency | The time delay between the transmission of a data packet and its reception. |
| line of sight | The clear path between radio antennas that is required for reliable communications. |
| link margin | The strength of the radio connection between two wireless devices. |
| node | The SureCross wireless network slave device used to provide sensing capability in a remote area. |
| system operating margin (also fade margin) | The difference between the received signal level (in dBm) and the receiver sensitivity (also in dBm) required for reliable reception. It is recommended that the receiver sensitivity be more than 10 dB less than the received signal level. For example, if the signal is about -65 dB after traveling through the air and the radio receiver is rated for -85 dB, the operating margin is 20 dB—an excellent margin. |





© 2007 Banner Engineering Corp. All rights reserved.



135765